

The New Chat Room How to Register, Login, and Use the Room

Effective with our first chat session with the New Year, we will have a new chat room. The old one will be discontinued. It is written in a different code, and because of that it will require registration for security purposes.

The url for the new chat room is <http://www.trailblazersww2.org/chat/index.php> and is now online to register and try it out. A link will be placed on the website in January. For now the old room will remain in place.

When you get to the new chat room you will see the following:

Login

Please enter your username and password to login

Username: **2**

Password:

1 [\[Register\]](#) [\[Send Password\]](#)

Stats

Users Online:	0	Online Users
Total Rooms:	1	
Users Registered:	2	

Upcoming Events

November						
S	M	T	W	T	F	S
		1	2	3	4	5
6	7	8	9	10	11	12
13	14	15	16	17	18	19
20	21	22	23	24	25	26
27	28	29	30			

If you have already registered, fill out the space indicating your username and password and click login (**2** in the above diagram). That will bring you into the chat room. If you have not registered, click where it indicates Register (**1** in the above diagram). You will come to this screen:

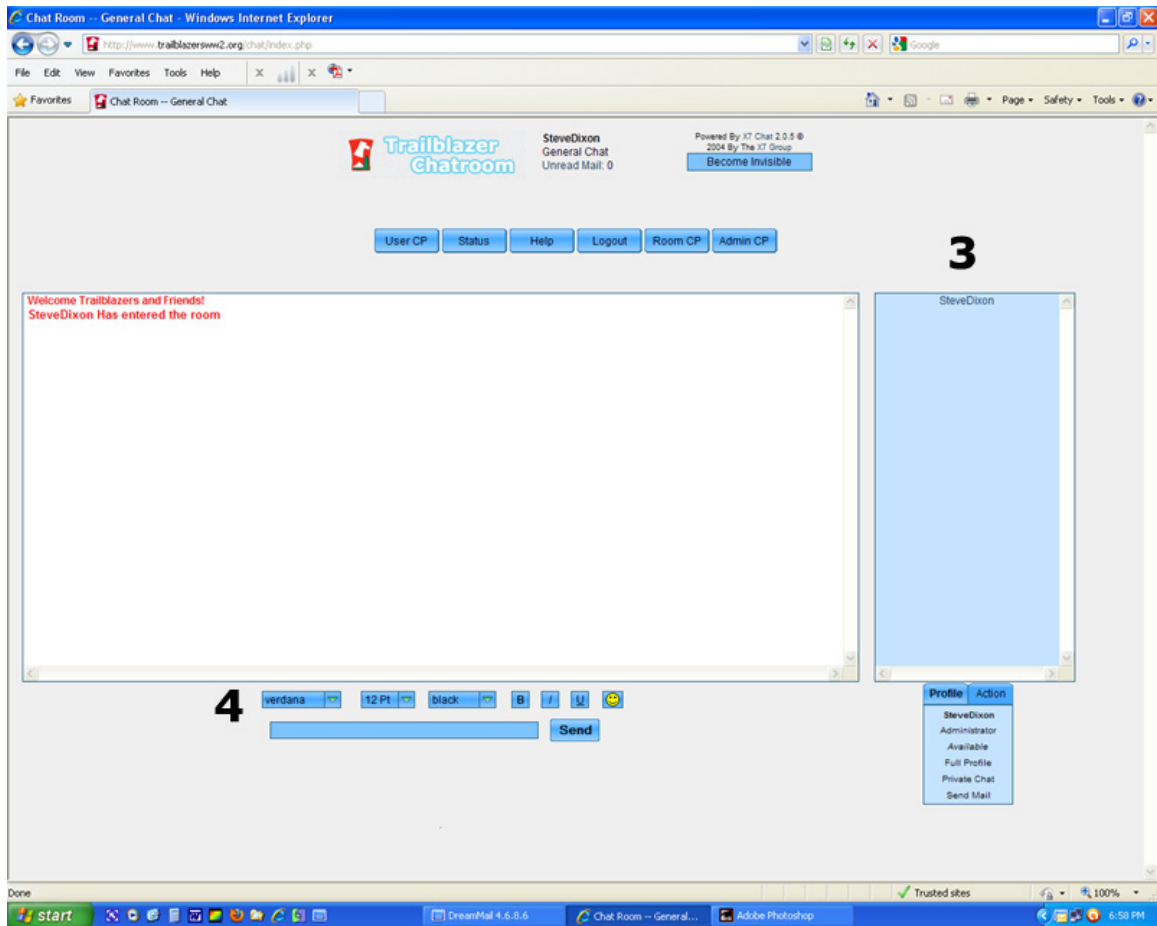
The screenshot shows a registration form titled "Register" with a light blue background. The form contains the following elements:

- A header bar with the title "Register".
- Instructional text: "Fill out this form to register, all fields are required."
- Four input fields, each preceded by a label: "Username:", "Password:", "Retype Password:", and "E-Mail:". Each label is followed by a rectangular text input box.
- A "Register" button located below the "E-Mail" field.
- Text below the button: "More details can be entered into your profile after registration".
- A "[Back]" link centered at the bottom of the form area.
- Footer text at the bottom of the page: "Powered By X7 Chat 2.0.5 © 2004 By The X7 Group".

Fill out all the fields, **making sure that your email address is correct**. Once you hit register, you will soon receive an email to activate your account. ***Be sure to check and make sure it is not going to your SPAM folder.*** When you receive it, follow the instructions. Once that is done, you can then head back to the login page and enter your username and password and login to the chat room.

Note: if you forget your password, you can click the send password link on the login page and your password will be sent to you. If you are having trouble registering, as a last step I can do that for you. Just send me an email.

If all is successful, you will now be in the chat room:



In the area labeled **3**, all users currently in the room will be listed. By clicking on their name, things you can do will be seen under the profile tab below the list of names. Here you can check their profile, initiate a private chat or send them an internal email. Email is checked by clicking the **USER CP** button. The limit on emails is 15 per person. This is necessary so our server is not filled up!

Across the top of the chat room will see a series of buttons. Registered users will only see the first four from the left: **USER CP, STATUS, HELP, and LOGOUT.**

USER CP: Here you can enter information about yourself that others can view, you can also upload a picture but it cannot be any bigger than 90 pixels by 90 pixels, and check internal email. If for some reason you cannot get your picture to upload, send me the picture and I will do it for you.

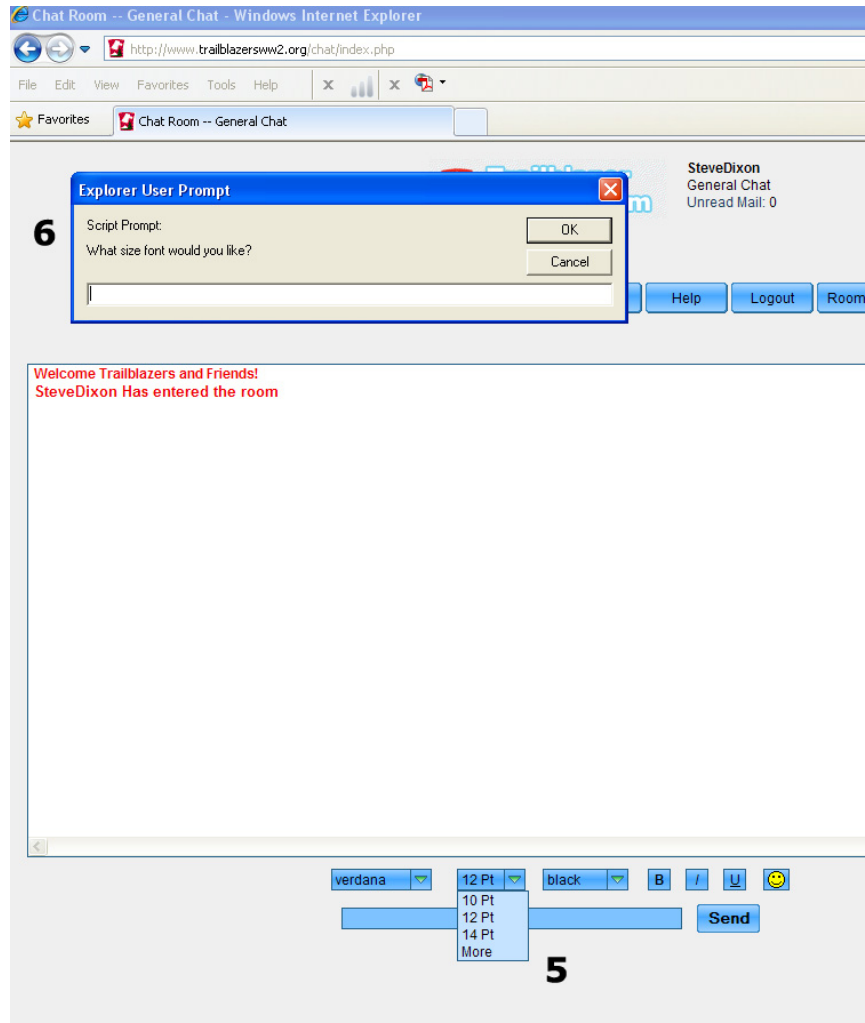
STATUS: By clicking this, a window will pop up allowing you to choose whether you are Away, Be Right Back, etc. You can also enter customized statuses if you choose to do so.

HELP: This is a comprehensive online help section for those that would like more detailed information on how things work.

LOGOUT: Click this to leave the room.

To enter your messages, simply type what you want in the area labeled (4). You can choose the type of font you wish to use, the size, the color and add smileys.

As for the size, you can enter a customized size to make the fonts bigger and easier to read. See the diagram below:



Where (5) is seen, choose "more" from the drop down menu. A new window will pop open (6) allowing you to enter a larger number. Then click "OK."

If you have any problems let me know at skdixon@bellsouth.net